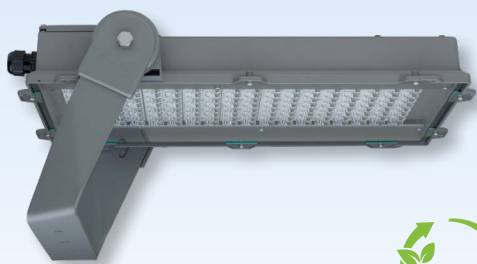


**NEW**

## AREALO 2 LED Large-Area Spotlight Series 7950...



### Applications:

Large areas such as car parks, storage areas, loading areas, loading stations, container terminals, harbour facilities, apron lighting at airports, open-cast mines, sports facilities, etc.

### Design:

**Housing:** Die-cast aluminium, 1-part, powder-coated DB 702 (mica-iron paint, grey) with LED module, optics, ECG, cable entry and pressure compensation system.

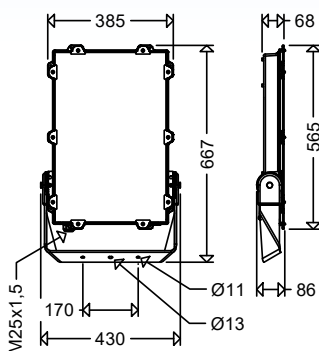
**Glass:** Flat safety glass pane, resistant to temperature changes, impact resistant IK09, silicone gasket.

**Light distribution:** Extremely asymmetrical beam.

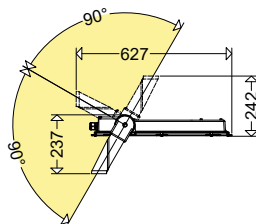
**Connection:** Connection compartment accessible from outside, terminal up to max. 2.5 mm<sup>2</sup>.

**Cable entry:** 1 cable entry M25 x 1.5 (1 cable gland).

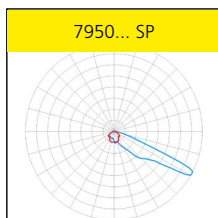
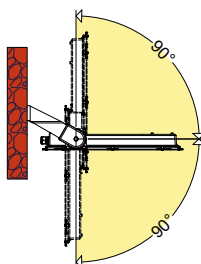
**Mounting:** Mounting bracket can be swivelled through 180° in 5° steps, with 3 holes for wall or ceiling mounting. Separate accessories are required for pole mounting (see accessories/spare parts).



Swivel range



Standard Mounting



### Electrical design:

**LED module:** 4,000 K or 3,000 K,  $R_a > 70$ , service life  $L_{90} > 100,000$  h, Zhaga compliant

**ECG:** 220-240 V, 50-60 Hz, Surge voltage resistance 10kV, overload and short circuit protection.

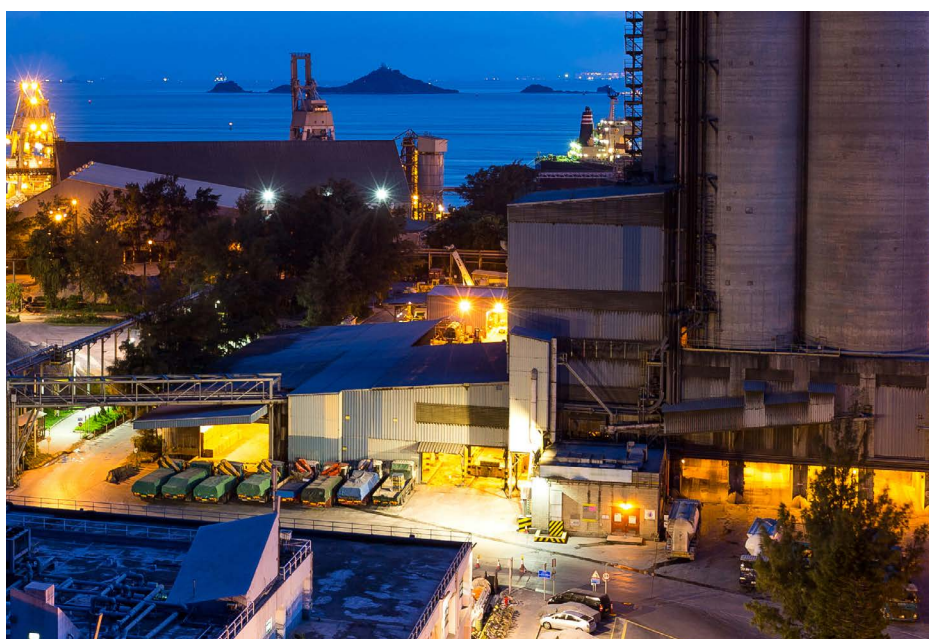
### Options:

- 2,200 K; light colour (722)
- 1,800 K; light colour (518)
- asymmetrical beam (A), plane surface floodlight-optics
- special painting in RAL colours
- seawater-resistant version
- vibration-resistant design
- bird deterrence

- dimming function via DALI2 interface (DIMD)
- power reduction with control phase (LR)
- constant luminous flux function (CL)
- compatible with LIMAS Line and LIMAS Air Light Management System

### Product highlights:

- durable, corrosion-resistant die-cast aluminium housing
- low total weight, low mast load
- excellent thermal management, long service life
- quick electrical connection due to outlaying electrical connection box
- homogeneous illumination due to the Multi-Layer-Technology
- eco-friendly, no light emission into the upper half-space,  $ULOR=0$
- all versions dimmable to 10 % with color temperature up to max. 3,000 K fulfill the Dark Sky requirements
- sustainable, control gear and LED-module replaceable by qualified personnel on-site
- future proof by using standardized LED-modules (Zhaga) and long-term availability of spare parts
- GreenLine luminaire, outstanding sustainable design



**Properties, limitations and details for controlling LED-light fittings:**

See "Technical Supplement"

All data are correct at the time of printing. Actual technical data can be found under [www.schuch.de](http://www.schuch.de).

All light fittings also available with connected cable (H07RN-F or NYM) in the required length.

Article No.	Type	Connected load [W]	Luminous flux [lm]	Luminous efficacy [lm/W]	Weight [kg] (without packing material)
-------------	------	--------------------	--------------------	--------------------------	---

## 7950... SP OP



### colour temperature 4.000K (light colour 740)

79500 0001	7950 14401SP OP	144	26.500	184	10,7
79500 0003	7950 14402SP OP	209	36.800	176	10,7
79500 0005	7950 14403SP OP	298	49.300	165	11,0
79500 0007	7950 14404SP OP	432	66.500	154	11,0
79500 0002	7950 14401SP DIMD OP	144	26.500	184	10,7
79500 0004	7950 14402SP DIMD OP	209	36.800	176	10,7
79500 0006	7950 14403SP DIMD OP	298	49.300	165	11,0
79500 0008	7950 14404SP DIMD OP	432	66.500	154	11,0

### colour temperature 3.000K (light colour 730)

79500 0009	7950 14401SP 730 OP	144	25.200	175	10,7
79500 0011	7950 14402SP 730 OP	209	35.000	167	10,7
79500 0013	7950 14403SP 730 OP	298	46.800	157	11,0
79500 0015	7950 14404SP 730 OP	432	63.200	146	11,0
79500 0010	7950 14401SP DIMD 730 OP	144	25.200	175	10,7
79500 0012	7950 14402SP DIMD 730 OP	209	35.000	167	10,7
79500 0014	7950 14403SP DIMD 730 OP	298	46.800	157	11,0
79500 0016	7950 14404SP DIMD 730 OP	432	63.200	146	11,0

## 7950... SP OV



**Version:** ... but without ballasts (OV), internal pole mounting or external mounting unit require, please order separately.

### colour temperature 4.000K (light colour 740)

79502 0200	7950 14401SP OV	144	26.500	184	10,3
79502 0201	7950 14402SP OV	209	36.800	176	10,3
79502 0202	7950 14403SP OV	298	49.300	165	10,3
79502 0203	7950 14404SP OV	432	66.500	154	10,3

### colour temperature 3.000K (light colour 730)

79502 0204	7950 14401SP 730 OV	144	25.200	175	10,3
79502 0205	7950 14402SP 730 OV	209	35.000	167	10,3
79502 0206	7950 14403SP 730 OV	298	46.800	157	10,3
79502 0207	7950 14404SP 730 OV	432	63.200	146	10,3

## Design RFL - Ready for Light Management System

The luminaires are prepared for the subsequent use of a Light Management System. An integrated socket allows retrofitting of light management components without tools.



Exclusively D4i control gear is being used in RFL luminaires from SCHUCH.

All D4i Zhaga Book 18 certified controllers and D4i Zhaga Book 18 certified sensors available on the market can be used in combination with RFL luminaires from SCHUCH. Controllers and sensors which do not comply with the D4i standard can limit the functionality of the luminaires and components. Moreover, in individual cases, such non-certified components may cause damage to both the luminaires and the components.

### Product highlights of the RFL version:

- standardized Zhaga compliant sockets
- subsequent use of a lighting management system possible at any time
- tool-free, quick assembly of the Light Management System components



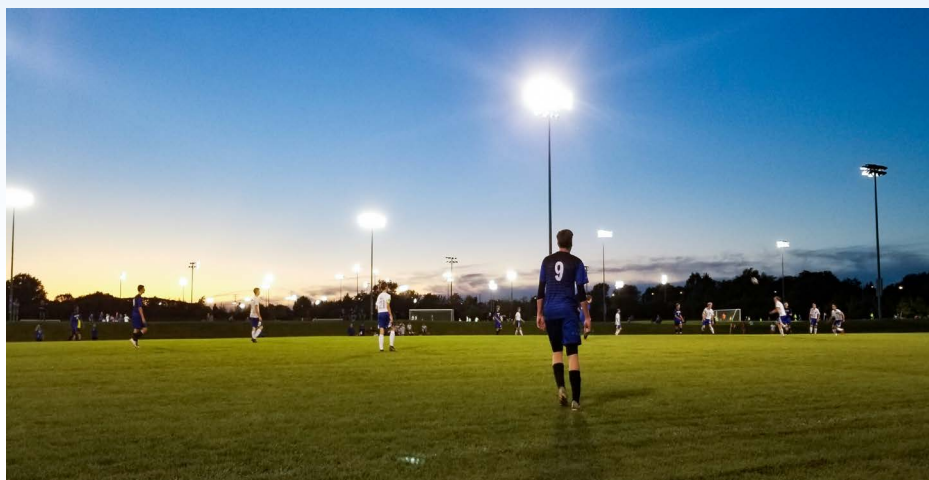
### colour temperature 4.000K (light colour 740)

79501 0001	7950 14404SP OP RFLO	432	66.500	154	11,0
------------	----------------------	-----	--------	-----	------

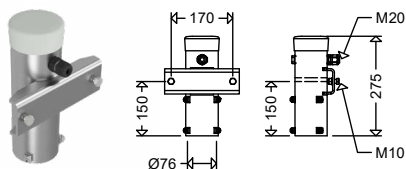
### colour temperature 3.000K (light colour 730)

79501 0002	7950 14404SP 730 OP RFLO	432	63.200	146	11,0
------------	--------------------------	-----	--------	-----	------

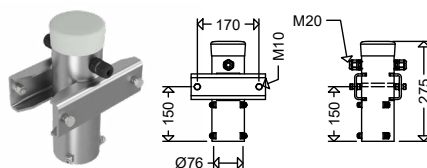
You can find **planning examples** for sports field lighting in our outdoor luminaires catalogue.



#### Single mounting: MAU 1 76/170 M10



#### Double mounting: MAU 2 76/170 M10



All pole top brackets made of galvanised steel. Painting in any RAL colour for additional charge.

## Accessories / Spare Parts

Article no.	Type	
79510 0001	<b>ABD 7950</b>	cover, pane safety glas clear, for 7950...
75739 9001	<b>MAU 1 76/170 M10</b>	Pole top for single mounting, Ø 76 mm, galvanized steel
75739 9002	<b>MAU 2 76/170 M10</b>	Pole top for double mounting, Ø 76 mm, galvanized steel
90117 9000	<b>2537</b>	plastic cable gland M25 x 1,5 black
79511 0003	<b>SD 7950 ST</b>	vibration absorbing suspension device for series 7950, galvanised steel
79511 0001	<b>TR 1200/108/170/5 M10/12</b>	crossbar 1200mm with bracket





## PLANNING EXAMPLES FOR SPORTS FIELD LIGHTING

The basis for planning is the DIN EN 12193 regulation. It defines clear standards for illuminance, uniformity, glare limitation and color rendering for different lighting classes.

### Lighting classes

<b>Class I</b>	High-performance competitions, international and national competitions with high visual requirements, high-performance training
<b>Class II</b>	Intermediate level competitions, regional competitions with medium visual requirements, performance training
<b>Class III</b>	Simple competitions, local competitions, school sports, general leisure sports, general training

### Requirements

Lighting class	average horizontal illuminance (Em)	Uniformity (Uo)
I	$\geq 500 \text{ lx}$	$\geq 0.7$
II	$\geq 200 \text{ lx}$	$\geq 0.6$
III	$\geq 75 \text{ lx}$	$\geq 0.5$

## INTELLIGENT LIGHT CONTROL

Simply switching the floodlights of a sports facility on and off is neither efficient nor cost-saving and environmentally friendly. When converting to LED technology, the question of intelligent lighting control therefore arises.

If one then takes into account the subsidies from the federal government within the framework of the municipal guidelines as well as the state sports associations and possibly the respective federal state, which can currently

amount to up to 80 % cumulatively at peak times, the decision should not be difficult.

### Dimming

#### The introduction to light control

The simplest solution is to dim the floodlights via DALI. Since the maximum illuminance is usually only required for matches and competitions, energy can be saved to a considerable extent by continuously dimming or switching on preset

lighting levels during training. All that is required for this is an AREALO in DIMD version.



## Smart lighting control with LIMAS Air

With the LIMAS Air Light Management System, you can conveniently control your floodlighting system via radio, without additional wiring, and save a maximum of energy costs at the same time.

The system is configured and controlled via a free app (Android or iOS) using a smartphone or tablet. Neither an internet connection nor a gateway is required for this.

The luminous flux of each individual luminaire/mast unit can be controlled separately. In conjunction with push-buttons, the pre-programmed scenes can be called up easily and conveniently, for example match and competition mode, training, half-field lighting or goalkeeper training, etc.

Please contact us. We will be happy to show you the possibilities LIMAS Air offers and support you in planning, projecting and configuring your system.



## Control components

Art.-Nr.	Type	
78512 0001	<b>7850 1VBOX RFL Lite TRA</b>	Distribution box 1-fold for RFL LIMAS Air HUB TRI for AREALO 7850 12804SP DIMD as truss structure. Additionally RFL LIMAS Air HUB (90546 9013) is required (not included in delivery).
78512 0002	<b>7850 2VBOX RFL Lite TRA</b>	Distributor box 2-fold for RFL LIMAS Air HUB TRI for AREALO 7850 25604SP DIMD as truss structure. Additionally RFL LIMAS Air HUB (90546 9013) is required (not included in delivery).
78512 0003	<b>7850 3VBOX RFL Lite TRA</b>	Distribution box 3-fold for RFL LIMAS Air HUB TRI for AREALO 7850 38404SP DIMD as truss structure. Additionally RFL LIMAS Air HUB (90546 9013) is required (not included in delivery).
78512 0010	<b>7850 VBOX RFL Lite TRA</b>	Distributor box for RFL LIMAS Air HUB TRI for AREALO 7850 12804SP OV, 7850 25604SP OV, 7850 38404SP OV as truss structure. Additionally RFL LIMAS Air HUB (90546 9013) is required (not included in delivery).
10183 0002	<b>LIMAS Air SENSBOX</b>	Repeater/amplifier box for LIMAS Air light management systems. An RFL LIMAS Air HUB radio control unit (90546 9013) is also required (not included).
90546 9013	<b>RFL LIMAS Air HUB TRI</b>	Light management controller (2.4 GHz mesh network) with radio antenna and RFL base.
90547 9009	<b>LIMAS Air TAST INTER UP max 4 KONT</b>	Push-button interface for connecting up to 4 analogue push-button contacts, mounting in flush-mounted box/branch box.
90547 9011	<b>LIMAS Air TAST UP max 4 KONT</b>	Battery-free quadruple wireless pushbutton, pressing the pushbutton generates energy to supply the pushbutton electronics.

no longer available