



## LED-Sheet Steel Light Fitting Series 190...

### Applications:

Industrial, craftsmen and commercial facilities with extreme conditions, aggressive environments (e.g. oil, grease) or high mechanical exposure, paint shops and spray booths (non-hazardous areas).

(For damp and cold ambient conditions with low duty cycles and in the case of aggressive atmosphere, please contact us)

### Design:

**Housing:** Sheet steel, light grey, powder coated (RAL 7035).

**Safety glass:** Frameless, clear, internal hinges, tiltable.

**Reflector:** Aluminium painted, with LED-modules, glare limitation modules

and all electrical components screwed to the glass.

**Central locking:** Internal, to be opened from outside with 5 mm allen key, inner hinges on the opposite side.

**Terminal:** 5-pole terminal, clamping range 2.5 mm<sup>2</sup> max.

**Cable entries:** 3 x M20 or 3 x M25 (2 cable gland and 2 blanking plugs), looping the cable at one side possible.

### Mounting:

2 fixing holes Ø 9 mm,

Sealing and pressure disks included.

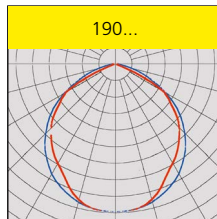
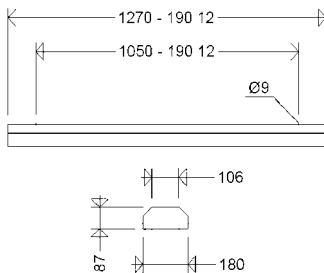
Use mounting screws Ø 6 mm.

### Note:

This light fitting is not suitable for application in areas with permanent high humidity in combination with only short periods of operation, such as sewage or stormwater retention bassins or water treatment plants.

### Note:

In case of permanently humid atmosphere please ask for stainless steel housings.



### Technical data:

**LED:** Linear modules 4,000 K, CRI > 80, service life L<sub>90</sub> > 50,000 h at 25 °C ambient temperature, service life L<sub>80</sub> > 70,000 h and L<sub>70</sub> > 100,000 h at max. ambient temperature

**ECG:** 220-240 V, 50/60 Hz, overload and short-circuit protection

**Ambient temperature:** -20 °C up to see article tables

### Options:

- 2,200 K, 2,700 K, 3,000 K, 5,000 K, 6,500 K; light colours (822, 827, 830, 850, 865)
- coloured LEDs, for signal applications
- through-wiring (DV), 5 x 2,5 mm<sup>2</sup>
- stainless steel version (E.), painted
- special painting in RAL colours
- for lower ambient temperatures (T40),

down to -40 °C

- for connection to a central power supply system (ZB)

- dimming function via DALI2 interface, compatible with LIMAS Line wired Light Management System (DIMD)

- Corridor Mode (DIMC)

### Product highlights:

- extremely flat and robust design
- smooth sheet steel housing without contamination-prone external locking parts
- comfortable central locking system with internal hinges
- reflector and cover in sandwich design to protect the LED-Modules from mechanical or electrostatic damages due to accidental contact
- homogeneous illumination by using glare limitation modules
- sustainable, control gear and LED-module replaceable by qualified personnel on-site
- future proof by using standardized LED-modules (Zhaga) and long-term availability of spare parts



Article no.	Type	Quantity of ECG	Connected load [W]	Luminous flux [lm]	Luminous efficacy [lm/W]	Ambient temperature max. [°C]	Substitute for ca. *	Weight [kg] without packing material
-------------	------	-----------------	--------------------	--------------------	--------------------------	-------------------------------	----------------------	--------------------------------------

## 190...



19002 0014	<b>190 12L40</b>	1	32	4.330	135	60	1 x 36 / 1 x 58	8,5
19002 0015	<b>190 12L60</b>	1	46	6.200	135	55	2 x 36 / 2 x 58	8,7

\* The given information is for rough orientation only. In each individual case a lighting calculation is necessary.

## Accessories / Spare Parts

Article No.	Type	
<b>Spare glass clear</b>		
19001 9002	<b>ABD 190 12</b>	cover, spare glass clear, for 190 12 ....
<b>Cable entries</b>		
25610 9000	<b>2561</b>	plastic cable gland M20 x 1,5
25730 9000	<b>2573</b>	threaded blanking plug M20x1,5
<b>Mounting accessories</b>		
26000 0004	<b>WW 26 P</b>	1 pair wall angle brackets
26000 0002	<b>WW 26 30 P</b>	1 pair wall angle brackets 30°
26000 0003	<b>WW 26 45 P</b>	1 pair wall angle brackets 45°
90000 0002	<b>DS 15A P</b>	1 pair ceiling brackets, galvanized steel
90032 0002	<b>DS 15AV P</b>	1 pair ceiling brackets, stainless steel

Properties, limitations and details for controlling LED-light fittings:

See "Technical Supplement"

All data are correct at the time of printing. Actual technical data can be found under [www.schuch.de](http://www.schuch.de).