

SEGURO Vandal Proof LED Light Fitting Series 142...

Applications:

Indoors as well as protected and unprotected outdoor areas, Subways, railway stations, underground/metro stations, car parks, lavatories, schools, sport stadiums, stairways, bus-stops, prisons etc. (For damp and cold ambient conditions with low duty cycles and in the case of aggressive atmosphere, please contact us)

Design:

Housing: Flat, sturdy aluminium profile, powder-coated, RAL 9016 (traffic white). Concealed cable tray and mounting holes on the back, all-round silicone gasket.

Cover: Frosted polycarbonate, with die-cast aluminium end caps, concealed

screw fixing, detachable and removable. **Reflector:** Aluminium, white painted, with Zhaga-compliant LED modules.

Fasteners: With stainless steel safety screws M6 (TORX Tx30 with pin) counter-sunk in the end caps, the cover and end caps are screwed to the housing.

Electrical connection: 3-pole connection terminal; max. 2.5mm².

Cable entries: 2 x Ø 20mm with sealing plugs, concealed in the end cap on the face side, for in-out and continuous row wiring.

Mounting system: 4 holes Ø 8mm, concealed. Please use screws Ø 6mm for mounting.

Technical data:

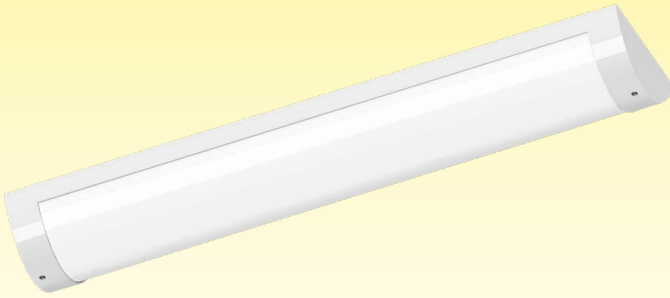
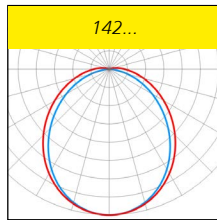
LED: Linear modules 4,000K, CRI > 80, service life L₉₀ > 50.000h at 25°C ambient temperature, service life L₈₀ > 70.000h and L₇₀ > 100.000h at max. ambient temperature

ECG: 220-240V, 50/60Hz, overload and short-circuit protection

Ambient temperature: -20°C bis +40°C

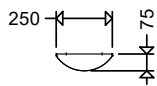
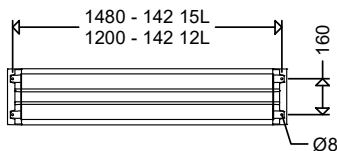
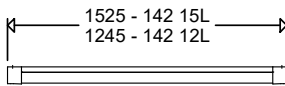
Options:

- 2,200K, 2,700K, 3,000K, 5,000K, 6,500K
 - signalization with **coloured LED**
 - asymmetrical beam (A), plane surface floodlight-optics
 - protection class II (SKII)
 - for higher ambient temperatures
 - for connection to group or central battery systems (ZB) or emergency mains
- respectively
- with dimming function via DALI2 interface, compatible with LIMAS Line BASIC/PRO (DIMD) Light Management System
 - through wiring up to 7x2.5 mm
 - cover with anti-graffiti coating (AGC)
 - special paint finish in any RAL colours



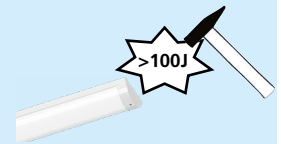
Note:

For applications in seaside areas we do recommend enclosures in special design with KTL coating.



Product highlights:

- extremely flat and sturdy design
- highly efficient with high luminous efficacy and low power consumption
- polycarbonate diffuser of extremely impact resistant, IK value acc. to EN 50102 > 5 x IK10 (1000 joule)
- homogeneous illumination by using frosted covers, no particular light points visible, comfortable perception of light, brilliant glare limitation
- safe function of the LED even in case of impacts or vibrations
- sustainable, control gear and LED-module replaceable by qualified personnel on-site
- future proof by using LED-modules according to Zhaga standard



Properties, limitations and details for controlling LED-light fittings:

See "Technical Supplement"

All data are correct at the time of printing. Actual technical data can be found under www.schuch.de.



Article no.	Type	Connected load [W]	Luminous flux [lm]	Luminous efficacy [lm/W]	Substitute for *	Weight [kg] without packing material
-------------	------	--------------------	--------------------	--------------------------	------------------	--------------------------------------

142 ...



14200 0003	142 12L22	17	2.550	150	1 x 36W	7,7
14200 0004	142 12L42	29	4.120	142	2 x 36W	7,7
14200 0007	142 12L60	39	5.490	140	2 x 58W	7,7
14200 0005	142 15L34	24	3.560	148	1 x 58W	9,4
14200 0006	142 15L60	42	6.050	144	2 x 58W	9,4

* The given information is for rough orientation only. In each individual case a lighting calculation is necessary.

Wall/ceiling angles WD 45 P



Corner mounting with WDW 142 45 P



Accessories / Spare Parts

Article No.	Type	
14211 9000	EK 142	End cap, powder-coated aluminium RAL 9016
14211 9002	ABD 142 12	cover, frosted PC diffuser, for 142 12 ...
14211 9003	ABD 142 15	cover, frosted PC diffuser, for 142 15 ...
90063 9000	2511	blanking plug M20
90045 9007	WDW 142 45 P	2 wall/ceiling angle 45°, steel painted to RAL 9016 for corner mounting