

## PRIMO XR Gas-tight LED-Tube Light Fitting Series 107...

### Application:

Areas which are subject to harmful gas loads, which may damage the LEDs or even cause their total failure. E. g. ammonia and sulfur compounds in companies in the chemical industry, papermaking or tire production and storage etc.

Areas where the luminaires are exposed to jet and pressurised water, high humidity, moisture and dust, for infrequent or occasional operation (inspection lighting) and in the automotive industry.

For use in agriculture and animal husbandry with high ammonia concentration, see **version 107... XR LW**.

(For damp and cold ambient conditions with low duty cycles and in the case of

aggressive atmosphere, please contact us)

### Design:

**Tube:** Acrylic glass (PMMA), modified for higher impact resistance, frosted for glare limitation, with welded end and connection caps.

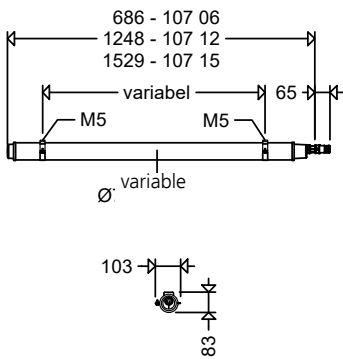
**Reflector:** : Aluminum, with LED Module and ECG.

**Connection:** 3-pole (DIMD 5-pole) quick connector (FastConnect). End cap with integrated plug, socket included in scope of delivery.

**Mounting:** Variable mounting distance by means of stainless steel pipe clamps (included in scope of delivery). For direct ceiling and wall mounting.

### Note:

The housing materials used for the PRIMO XR show good chemical resistance against a variety of chemicals. See also paragraph "Plastics in SCHUCH luminaires" in the "Technical supplement".



For vertical installation, please note:  
Plug part must face downwards. Through wiring not possible. For Cable looping please use accessory 107 SVDA 3 or 107 SVDA-5 for DIMD.

### Technical data Version 107... XR:

**LED:** Linear modules 4,000 K, CRI > 80, service life  $L_{90} > 50,000$  h at 25 °C ambient temperature, service life  $L_{80} > 70,000$  h and  $L_{70} > 100,000$  h at max. ambient temperature

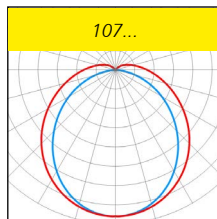
**ECG:** 220-240 V, 50/60 Hz, overload and short-circuit protection

**Ambient temperature:** -20 °C up to +40 °C

### Options:

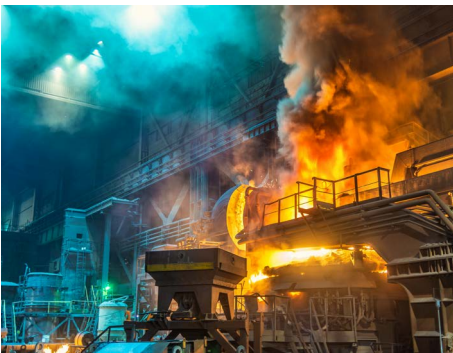
- 2,200 K, 2,700 K, 3,000 K, 5,000 K, 6,500 K; light colours (822, 827, 830, 850, 865)
- 1,800 K; light colour (518), amber for insect-friendly lighting in outdoor areas etc.
- high colour rendering index  $R_a > 90$
- green LEDs, for lighting potato stores
- coloured LEDs, for signal applications

- through-wiring (DV), 3 x 1.5 mm<sup>2</sup> or 5 x 1.5 mm<sup>2</sup> for DIMD types
- for higher ambient temperatures (H50)
- for wide temperature ranges (T40 H50)
- protection class II (SKII)
- for connection to a central power supply system (ZB)
- Corridor Mode (DIMC)



### Product highlights:

- impact-resistant PMMA tube with high mechanical strength
- extremely tight against harmful gases, hermetically sealed thanks to welding of pipe and end caps as well as a perfectly sealed quick connector.
- dust- and pressure water tight, (IP68, 3 m/ 30 min).
- IPX9K-tested (high pressure / steam jet cleaning)
- can also be used in unprotected outdoor areas
- homogeneous illumination by using a frosted tube, comfortable perception of light, brilliant glare limitation
- fast connection thanks to integrated FastConnect quick connector
- fast mounting with variable mounting distances by means of movable stainless steel pipe clamps



Article no.	Type	Connected load [W]	Luminous flux [lm]	Luminous efficacy [lm/W]	Substitute for *	Weight [kg] without packing material
					IP68 IPX9K	

### 107... XR (Xtreme Resistance)

10702 0001	107 06L12 XR	10	1.300	130	1 x 18W	1,3
10702 0002	107 06L20 XR	16	2.190	137	2 x 18W	1,3
10702 0003	107 12L22 XR	15	2.260	151	1 x 36W	2,2
10702 0005	107 12L42 XR	29	4.370	151	2 x 36W	2,2
10702 0004	107 15L34 XR	24	3.710	155	1 x 58W	2,6
10702 0006	107 15L60 XR	42	6.270	149	2 x 58W	2,6

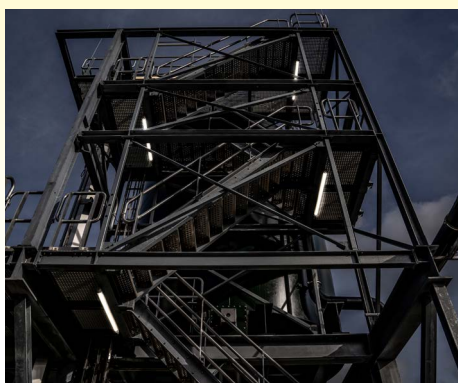
\* The given information is for rough orientation only. In each individual case a lighting calculation is necessary.

DIMD versions are compatible with LIMAS Line light management system.

Properties, limitations and details for controlling LED-light fittings:

See "Technical Supplement"

All data are correct at the time of printing. Actual technical data can be found under [www.schuch.de](http://www.schuch.de).



Article no.	Type	Connected load [W]	Luminous flux [lm]	Luminous efficacy [lm/W]	Substitute for *	Weight [kg] without packing material
-------------	------	--------------------	--------------------	--------------------------	------------------	--------------------------------------

## 107... XR DIMD (Xtreme Resistance)



10702 0021	107 06L12 XR DIMD	10	1.300	130	1 x 18W	1,3
10702 0022	107 06L20 XR DIMD	16	2.190	137	2 x 18W	1,3
10702 0023	107 12L22 XR DIMD	15	2.260	151	1 x 36W	2,2
10702 0025	107 12L42 XR DIMD	29	4.370	151	2 x 36W	2,2
10702 0024	107 15L34 XR DIMD	24	3.710	155	1 x 58W	2,6
10702 0026	107 15L60 XR DIMD	42	6.270	149	2 x 58W	2,6

## 107... XR LW



### for use in stables contaminated with ammonia and in agricultural premises

#### Application:

Stables in agriculture, animal husbandry, fattening and rearing companies etc., rooms with high dust pollution and increased fire risk, e.g. barns, straw and feed stores

etc., areas where the light fittings are exposed to jet and pressurized water, e.g. cleaning with steam jets.

#### Technical data Version 107... XR LW:

LED: Linear modules 4,000 K, CRI > 80, L<sub>80</sub> > 50,000 h and L<sub>70</sub> > 100,000 h at max. ambient temperature  
ECG: 220-240 V, 50/60 Hz, overload and short-circuit protection  
Ambient temperature: -20 °C up to +35 °C

#### Additional advantages:

- permanently ammonia-resistant
- flicker-free light for stress avoidance and promotion of animal welfare
- low-glare light through satined tube
- DLG (German Agricultural Society) exam



10703 0015	107 12L42 XR LW	30	3.900	130	2 x 36W	2,2
10703 0014	107 15L34 XR LW	28	3.660	131	1 x 58W	2,6
10703 0016	107 15L60 XR LW	43	5.700	133	2 x 58W	2,6
10703 0025	107 12L42 XR LW DIMD	30	3.900	130	2 x 36W	2,2
10703 0024	107 15L34 XR LW DIMD	28	3.660	131	1 x 58W	2,6
10703 0026	107 15L60 XR LW DIMD	43	5.700	133	2 x 58W	2,6

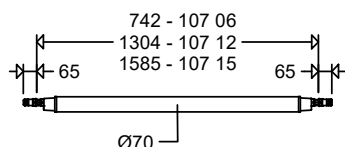
\* The given information is for rough orientation only. In each individual case a lighting calculation is necessary.

DIMD versions are compatible with LIMAS Line light management system.

#### Gas-tight encapsulated light sensor

Specially developed for use in environments contaminated with harmful gases, our new XR DS light sensor is ideal for animal houses contaminated with ammonia. Robustly constructed and gas-tight encapsulated, it offers outstanding durability and reliability in these demanding areas.

See catalog chapter Light management systems/LIMAS Line.



#### Through wiring

The light fittings (PRIMO XR and PRIMO LW) are available with through wiring installed at the factory only. The dimensions of the light fitting change due to the quick plug connection integrated into the connection cap on both sides (see dimension drawing). For the last luminaire in the light band, the socket part on the luminaire must be covered with a locking piece (see accessories / spare parts).

## Accessories / Spare Parts

Article no.	Type	
<b>Cable entries</b>		
90278 9005	107 SVDA-3	plug-in connection double connection to looping in/out 3-pole grey
90278 9006	107 SVDA-5	plug-in connection double connection to looping in/out, 5-pole grey for DIM
<b>Locking pieces for luminaires with through-wiring</b>		
90278 9007	107 VS-3	3-pole locking piece grey
90278 9008	107 VS-5	5-pole locking piece grey
<b>Accessories</b>		
90272 9003	107 RO V4A P	stainless steel pipe clamp - 1.457 Mounting set (1 pair)